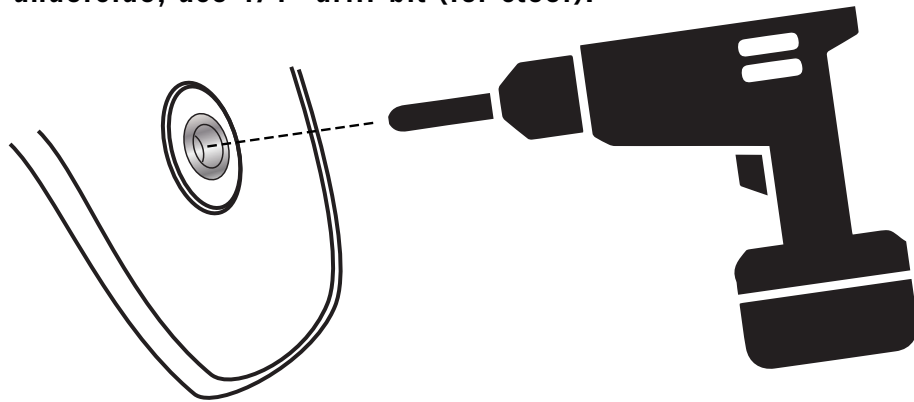




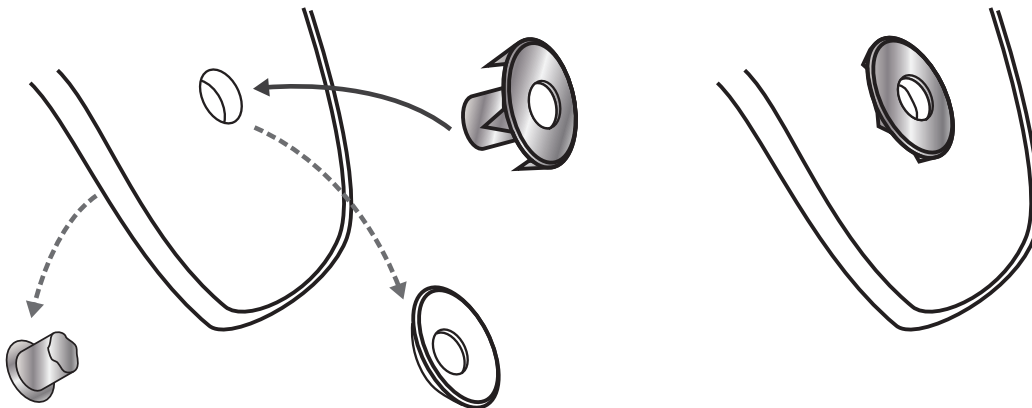
# BUCKLE REPLACEMENT

If buckle is attached by screw, please use Philips #2 Screwdriver to replace.  
If buckle is attached by rivet, please follow instructions below:

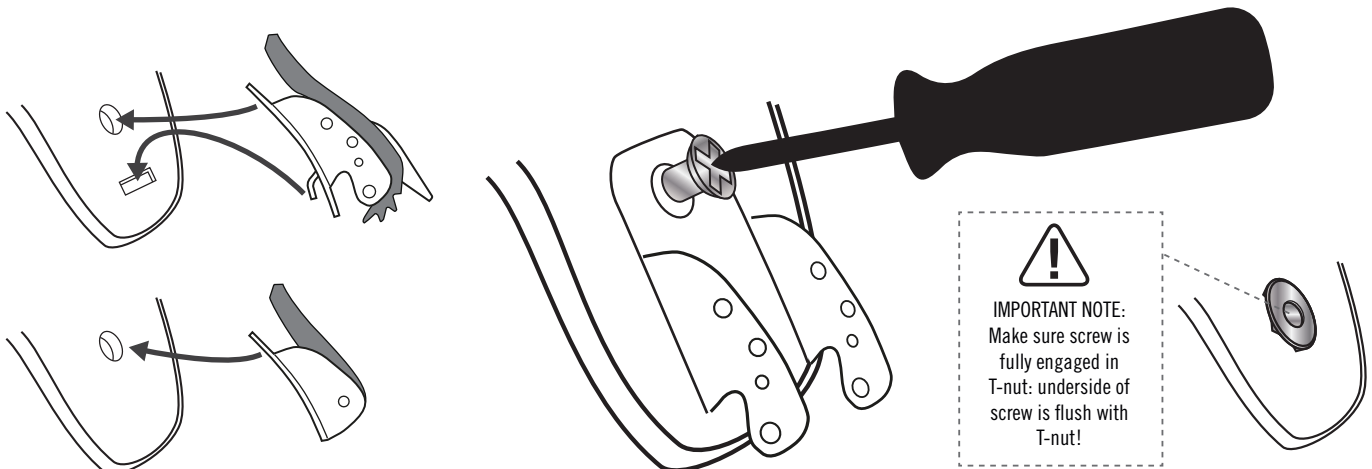
Drill rivet from underside, use 1/4" drill-bit (for steel).



Remove old rivet and washer, and place 'spike T-nut' into hole on underside of strap.



On topside, attach buckle with supplied screw into spiked T-nut, using Philips #2 screwdriver.



**IMPORTANT NOTE:** Be sure that all parts are assembled correctly and secure, failure to do so may cause serious injuries. Flow recommends that any and all service and repairs to your bindings be done by a trained, professional mechanic. For our full liability policy, how-to tricks and tips and more, please visit [WWW.FLOW-SNOWBOARDING.COM](http://WWW.FLOW-SNOWBOARDING.COM)

