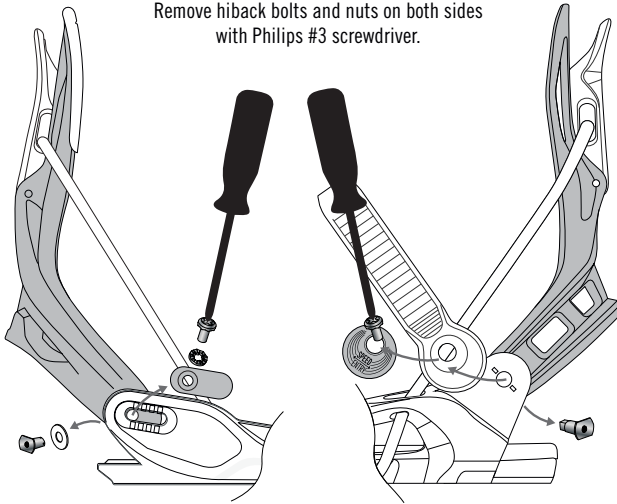


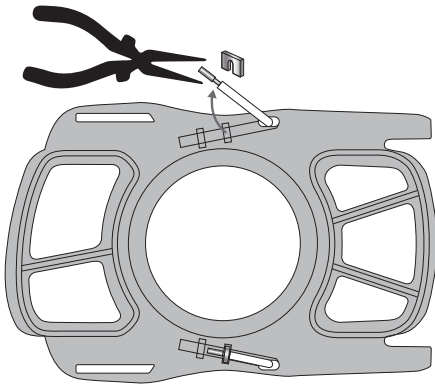
Flite, Micron, H and AXIS-series UniBack

Remove hiback bolts and nuts on both sides with Philips #3 screwdriver.



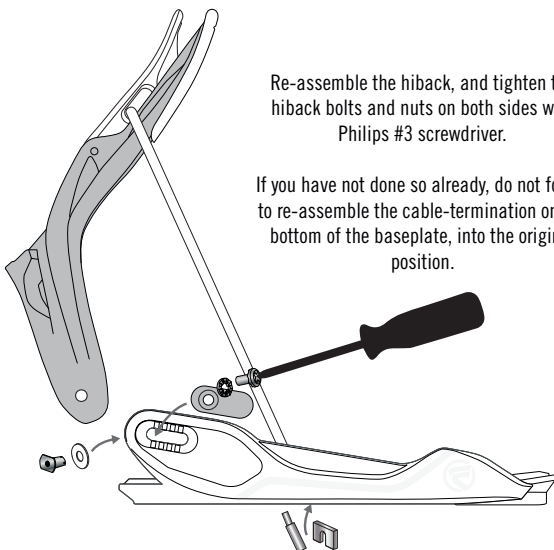
AXIS-Series

Undo U-shaped cable-termination on bottom of baseplate to disassemble and re-assemble cable through the snaplock. Place U-shaped cable termination back into the original position.



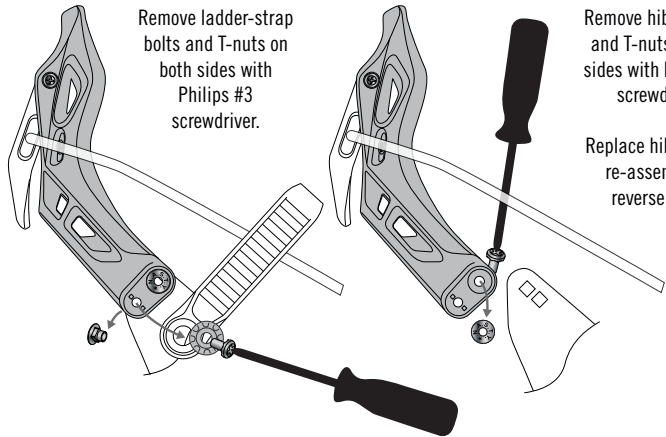
Re-assemble the hiback, and tighten the hiback bolts and nuts on both sides with Philips #3 screwdriver.

If you have not done so already, do not forget to re-assemble the cable-termination on the bottom of the baseplate, into the original position.



Fuse and NX2-series Asym UniBack + ModBack

Remove ladder-strap bolts and T-nuts on both sides with Philips #3 screwdriver.

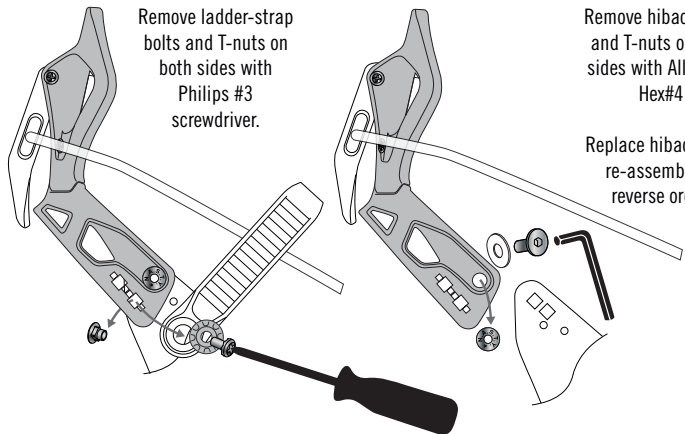


Remove hiback bolts and T-nuts on both sides with Philips #3 screwdriver.

Replace hiback, and re-assemble in reverse order.

Fuse-GT and NX2-GT series Aluminum ModBack

Remove ladder-strap bolts and T-nuts on both sides with Philips #3 screwdriver.

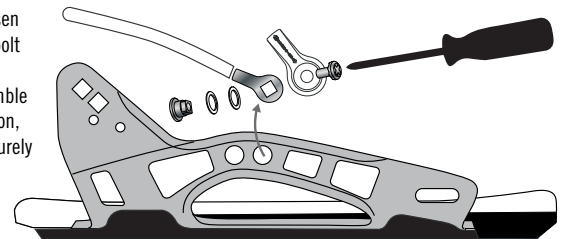


Remove hiback bolts and T-nuts on both sides with Allen-key Hex#4

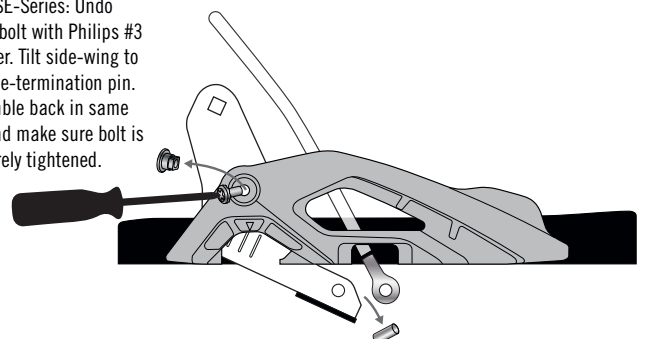
Replace hiback, and re-assemble in reverse order.

Undo the cable-termination from baseplate to disassemble and re-assemble cable through the snaplock.

On NX2-Series: Loosen Cable-termination bolt with Philips #3 screwdriver. Reassemble back in same position, make sure bolt is securely tightened.



On FUSE-Series: Undo side-wing bolt with Philips #3 screwdriver. Tilt side-wing to undo cable-termination pin. Reassemble back in same position and make sure bolt is securely tightened.



IMPORTANT NOTE: Be sure that all parts are assembled correctly and secure, failure to do so may cause serious injuries. Flow recommends that any and all service and repairs to your bindings be done by a trained, professional mechanic. For our full liability policy, how-to tricks and tips and more, please visit WWW.FLOW-SNOWBOARDING.COM

